

Beautiful beaded bracelet

Beautiful beaded bracelet and pattern for it!



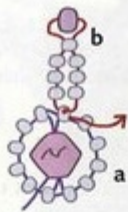


Fig. 1: Adding the first petal

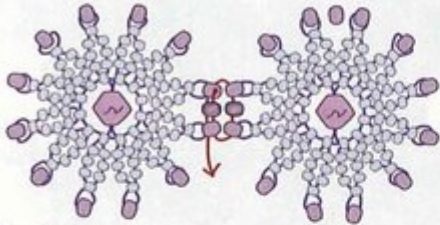


Fig. 2: Connecting 2 flowers

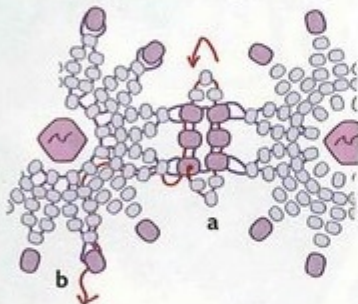


Fig. 3: Working the picots and setting up for the next connection

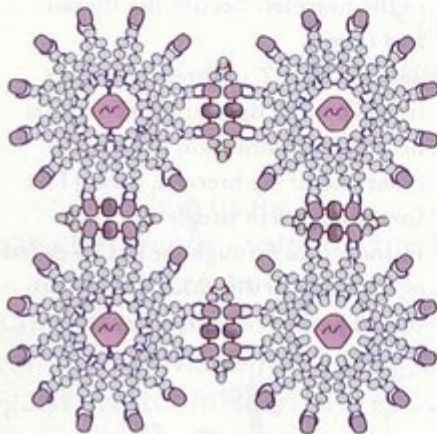


Fig. 4: Connecting 4 flowers into a square

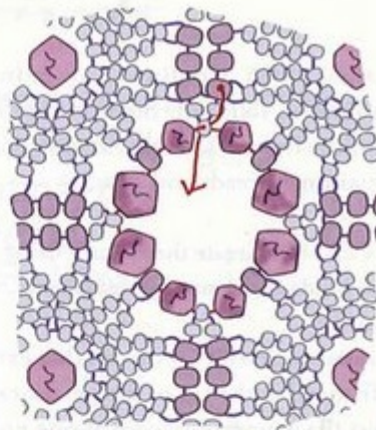


Fig. 5: Embellishing the square's opening

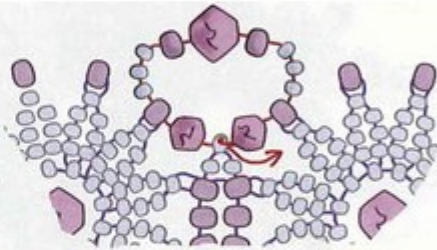


Fig. 6: Working an edge loop

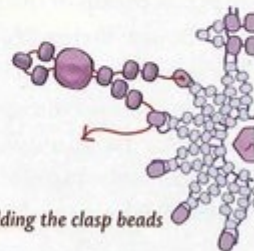


Fig. 7a: Adding the clasp beads

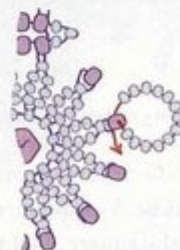


Fig. 7b: Adding a clasp loop